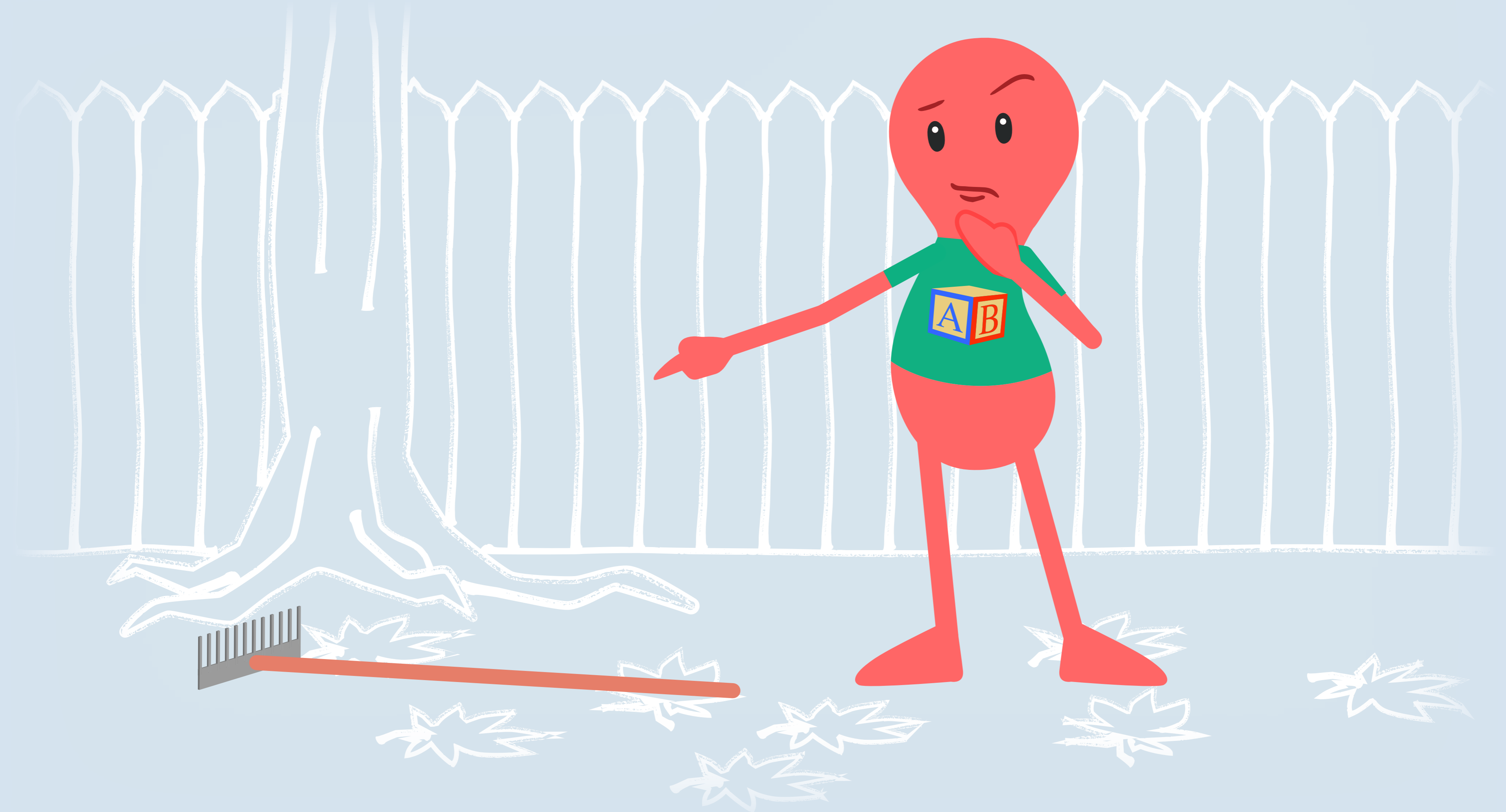
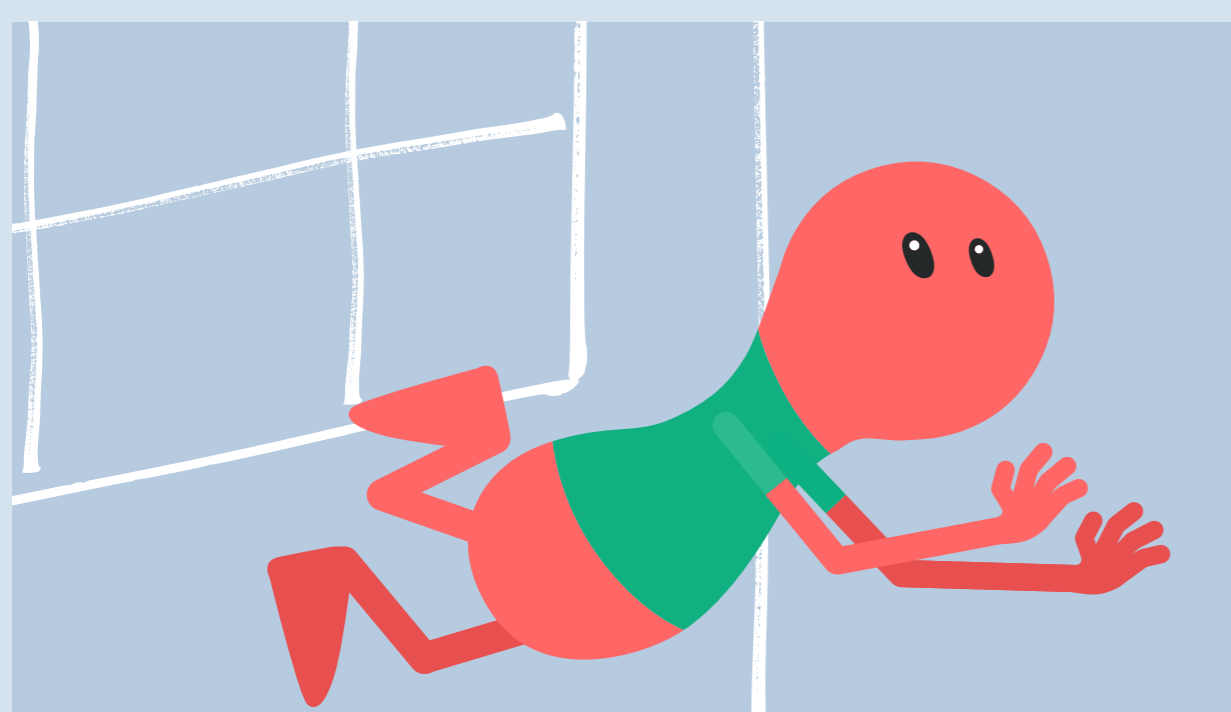


How to avoid workplace injuries.

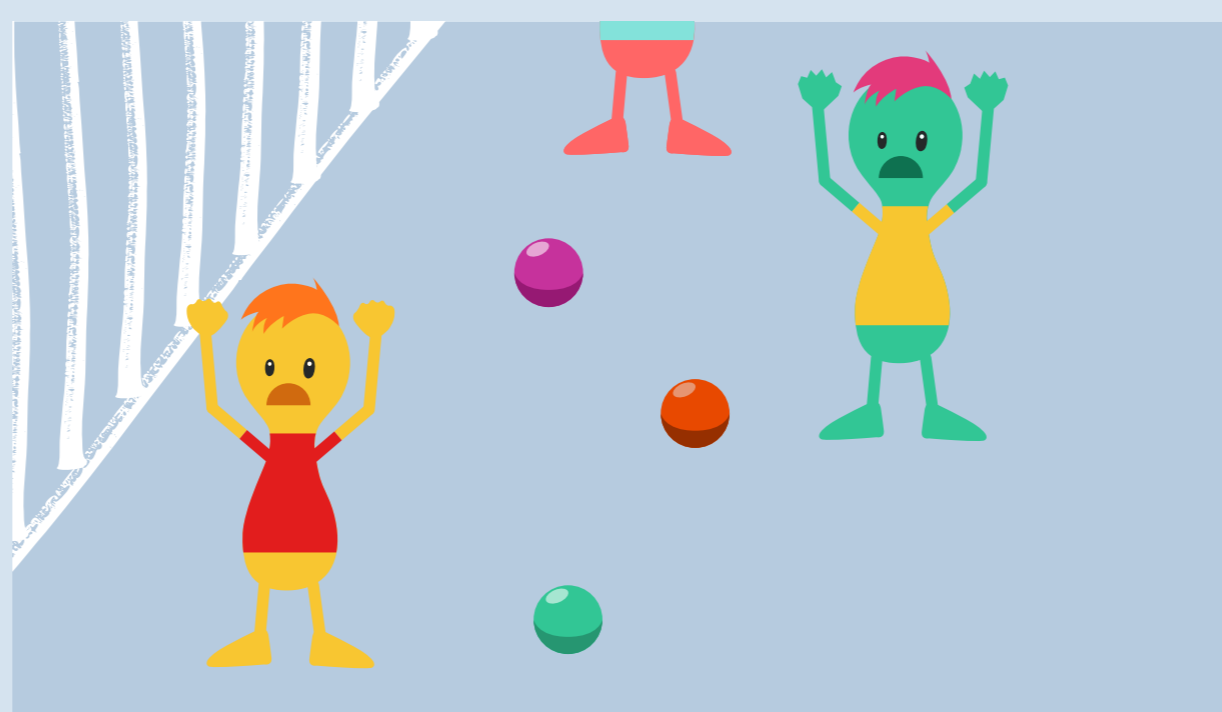
When moving around outside the centre...



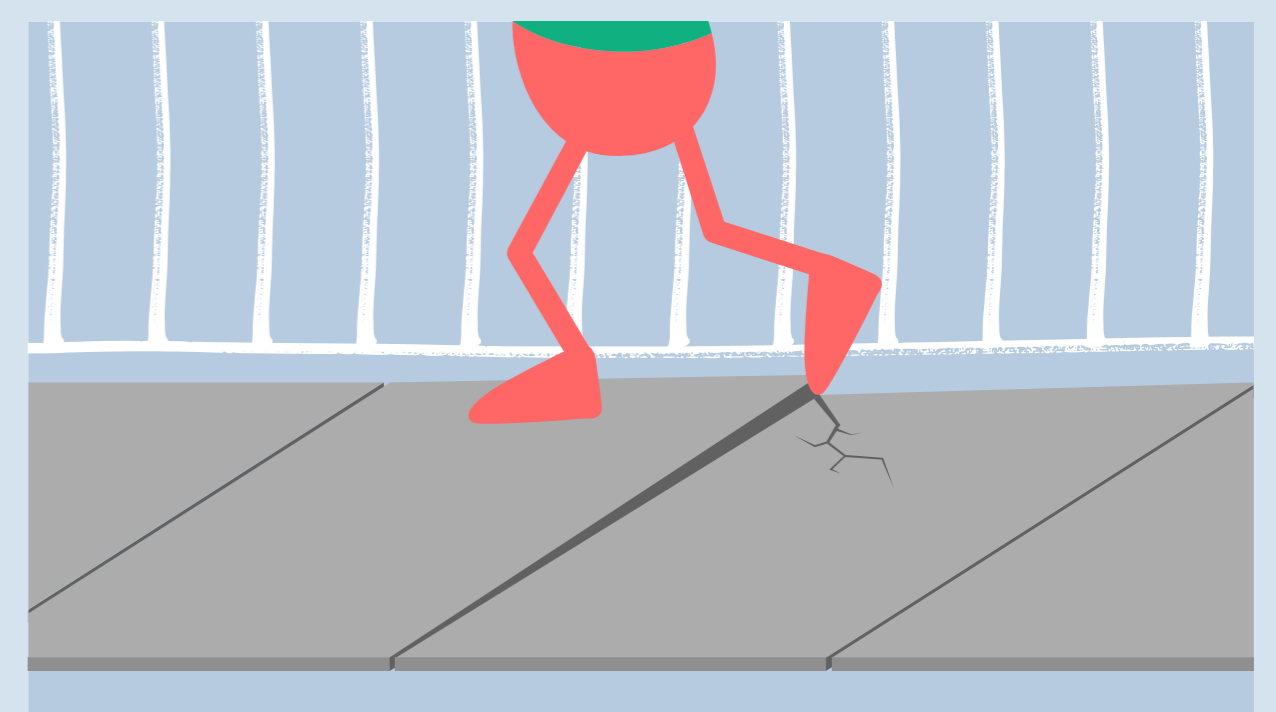
Always scan the environment, looking for hazards.



Remember that trips and falls are more common and more serious than most of us think.



Be mindful of focusing on children moving around you as you're walking.



Be extra cautious when around uneven surfaces.

To lodge a claim with Guild Insurance, go to [guildinsurance.com.au/claims](https://www.guildinsurance.com.au/claims)
If you are unsure if an incident needs to be lodged as a claim, speak to your Guild account manager.
For any other information or advice, contact Guild on **1800 810 213** or visit [guildinsurance.com.au](https://www.guildinsurance.com.au)

Guild Early Learning Pty Ltd ACN 618 589 370, ABN 516 185 893 70 is an authorised representative of Guild Insurance Limited ABN 55 004538 863, AFS Licence No. 233791, the policy issuer. Guild Early Learning has an arrangement with Guild Insurance to distribute the Guild Early Learning Workers Compensation Policy issued by Guild Insurance (the insurer). This poster contains information of a general nature only, and is not intended to constitute the provision of legal advice. For more information contact Guild Insurance on 1800 810 213. WRK281223 WHS Early Learning posters E 02/2023

